



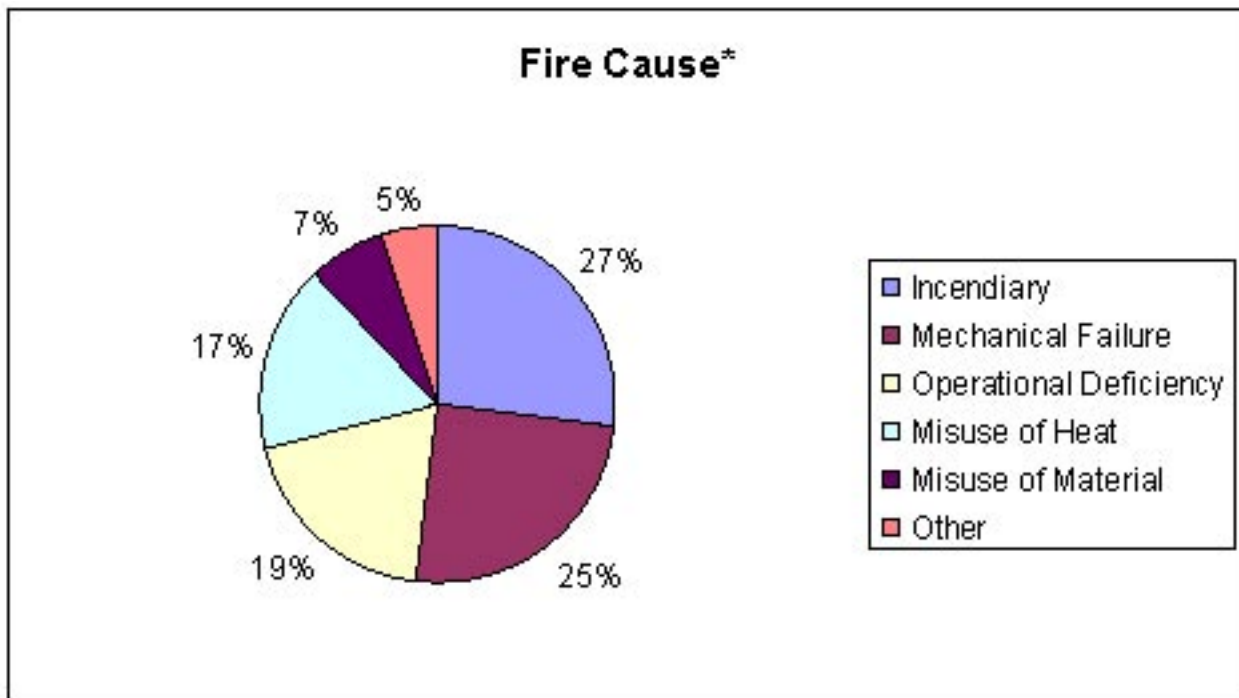
*DALLAS FIRE-RESCUE*  
*ACTIVITY REPORT 2002-2003*



City of Dallas, Texas

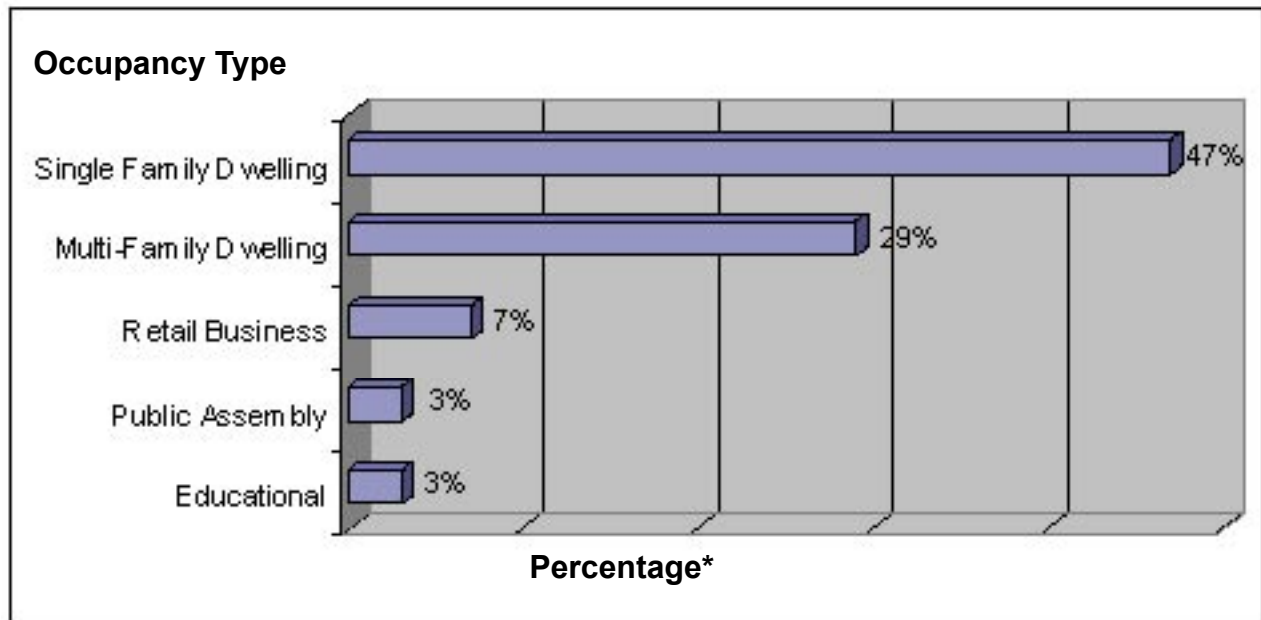
# FIRE ACTIVITY

Total Incidents	103,821
Daily Average Incidents	284
Average Response Time	4.6 Min.
Fire Fatalities	18
Structure Fires	1801
Structure Fire Loss	\$33,144,321
Vehicle Fires	2,008
Other Fires	2,946
Motor Vehicle Collisions	18,082
Assist Rescues (EMS)	44,692
Total False Calls	14,484



\*Fire causes are placed into these categories for simplicity in reporting. Detailed description: INCENDIARY- deliberately set with or without accelerant use; MECHANICAL FAILURE – electrical short circuit and lack of maintenance; MISUSE OF HEAT – children playing with matches and abandoned burning items; OPERATIONAL DEFICIENCY – includes unattended heat source, accidentally turned on; accidentally turned off; MISUSE OF MATERIAL – combustible too close to heat source and improper storage. Information pertains to structure fires only.

## FIRE OCCURRENCE (TOP 5)



\*Percentage of all structure fires

## ACTIVE DEPARTMENT FLEET

Engines (includes 2 paramedic engines)	54
Ladder Trucks	21
Rescue Units (MICU)	41 (includes 9 Peak Demand)
Chief Vehicles/Command units	11
Aircraft Rescue Firefighting units	4
Hazardous Materials unit	1
Technical Rescue unit	1
Mobile Air cascade unit	1
Booster Pumps (standby-not staffed)	9
Rescue Boats (non-firefighting)	9
 <i>Total Front Line Equipment</i>	 <b>152</b>

## ENGINE ACTIVITY

RANK	COMPANY	RUNS	RANK	COMPANY	RUNS
1	EN49	3,427	28	EN36	2,104
2	EN34	3,201	29	EN29	2,102
3	EN33	2,983	30	EN03	2,098
4	EN54	2,964	31	EN19	2,095
5	EN25	2,891	32	EN24	2,035
6	EN37	2,889	33	EN51	2,019
7	EN52	2,854	34	EN44	1,976
8	EN43	2,828	35	EN15	1,973
9	EN18	2,794	36	EN23	1,933
10	EN22	2,793	37	EN16	1,929
11	EN11	2,770	38	EN04	1,856
12	EN39	2,651	39	EN55	1,852
13	EN05	2,603	40	EN14	1,837
14	EN20	2,563	41	EN56	1,828
15	EN08	2,540	42	EN10	1,697
16	EN28	2,450	43	EN01	1,687
17	EN42	2,432	44	EN35	1,623
18	EN53	2,348	45	EN27	1,503
19	EN30	2,336	46	EN02	1,496
20	EN46	2,302	47	EN31	1,462
21	EN48	2,281	48	EN17	1,440
22	EN32	2,271	49	EN41	1,402
23	EN06	2,153	50	EN07	1,363
24	EN47	2,126	51	EN13	1,181
25	EN38	2,126	52	EN45	1,110
26	EN57	2,119	53	EN09	492
27	EN26	2,105	54	EN12	400

## TRUCK ACTIVITY

RANK	COMPANY	RUNS	RANK	COMPANY	RUNS
1	TR49	2076	12	TR53	1227
2	TR43	2044	13	TR24	1140
3	TR20	1818	14	TR03	1107
4	TR34	1687	15	TR15	1066
5	TR37	1633	16	TR26	1047
6	TR57	1593	17	TR39	923
7	TR25	1592	18	TR23	890
8	TR04	1550	19	TR07	877
9	TR11	1492	20	TR19	818
10	TR36	1323	21	TR17	769
11	TR41	1247			

## CHIEF ACTIVITY

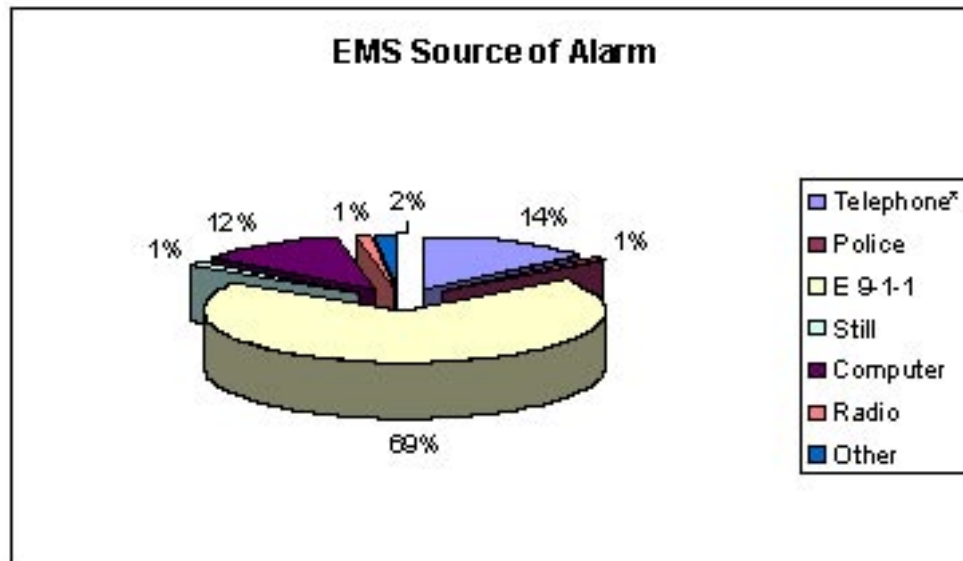
RANK	COMPANY	RUNS
1	CH03	1077
2	CH01	1008
3	CH06	936
4	CH05	917
5	CH04	900
6	CH08	668
7	CH07	621
8	CH02	600
9	CH09	506

## HAZ-MAT ACTIVITY

HM04	121
------	-----

# EMS ACTIVITY

Total Incidents	147,885
Daily Average Incidents	405
Average Response Time	5.3 Min.
Total Patients Seen	110,308
Patients Transported	59,820
Transport Rate	54.20%



\*includes calls initially placed to the 3-1-1 call center

## RESCUE ACTIVITY

Rank	Rescue	Runs	Avg/Day	Rank	Rescue	Runs	Avg/Day
1	R11	5,404	15	18	R22	4,090	11
2	R33	5,039	14	19	R24	4,059	11
3	R25	4,986	14	20	R46	3,990	11
4	R26	4,975	14	21	R38	3,957	11
5	R57	4,941	14	22	R31	3,950	11
6	R37	4,925	13	23	R32	3,870	11
7	R49	4,620	13	24	R51	3,854	11
8	R06	4,620	13	25	R45	3,797	10
9	R34	4,567	13	26	R47	3,705	10
10	R15	4,520	12	27	R17	3,535	10
11	R28	4,516	12	28	R35	3,519	10
12	R03	4,497	12	29	R30	3,095	8
13	R23	4,285	12	30	R41	2,820	8
14	R18	4,213	12	31	R07	2,691	7
15	R53	4,208	12	32	R10	2,352	6
16	R44	4,133	11	33	R09	1,349	4
17	R19	4,097	11	34	R12	743	2

## PEAK DEMAND RESCUE

Rank	Rescue	Runs	Avg/Day	Rank	Company	Runs	Avg/Day
1	R70	2,520	7	8	R20	1,588	4
2	R08	2,095	6	9	R71*	908	9
3	R52	1,898	5	10	R72**	371	7
4	R05	1,842	5				
5	R43	1,774	5		Partial Service Dates		
6	R48	1,709	5		*R71 and R72 - Friday and Saturday Only		
7	R54	1,633	4		**R72 (April 4, 2003 - Sept. 30, 2003)		

## ADMINISTRATION

Operating Budget	\$162,577,508
% of overall city budget	19.9%
Fire Personnel	
Emergency Operations	1,600
Fire Prevention/Investigation	84
Total Uniformed	1,684
Civilian support personnel	264
<i>Total personnel strength</i>	<i>1,948</i>

## COMMUNICATIONS

Total Emergency Calls Received (9-1-1)	2,034,366
Total Non-Emergency Calls Received (3-1-1)	1,394,909
<i>Total Calls Received</i>	<i>3,429,275</i>

\*Dallas Fire-Rescue is responsible for the administrative, operational and managerial activities of the city's communications call center. It is staffed by both civilian and uniformed personnel.

## FIRE PREVENTION, EDUCATION & INSPECTION

### CODE ACTIVITY

Inspections	57,481
Re-Inspections	14,265
Code Contacts	6,652
Special tests	47,697
Plans Reviewed	3,106
Failed Contacts*	4,220

### EDUCATION ACTIVITIES

Fire education programs	6,126
Program assist	780
Program attendance	73,641
Smoke detectors installed	3,651

### CODE ACTIVITY RESULTS

Inspection hazards found	48,246
Inspection hazards corrected	45,683
Citations issued	1,038
Notices issued	6,378
Permits and licenses issued	1,218

\*Business closed or person in charge unavailable

## FIRE INVESTIGATION / ARSON

Incendiary structure fires	482
Incendiary structure fire loss	\$15,149,970
Investigations	2,744
Investigations cleared by arrest	327
Felony charges filed	78
Misdemeanor charges filed	34

**DALLAS FIRE-RESCUE  
EXECUTIVE COMMAND STAFF**

**STEVE E. ABRAIRA  
FIRE CHIEF**

**KEN DORSETT  
ASSISTANT CHIEF, EMERGENCY OPERATIONS**

**ROBERT L. BAILEY  
ASSISTANT CHIEF, ADMINISTRATION**

**ROLAND R. GAMEZ  
COMMUNICATIONS**

**DEBRA K. CARLIN  
ASSISTANT CHIEF/FIRE MARSHAL**

**LOUIE BRIGHT  
ASSISTANT CHIEF, EMERGENCY MEDICAL SERVICES**

Dallas Fire-Rescue  
Media Relations Office  
1500 Marilla St., 7AS  
Dallas, TX. 75201

CARING, SERVING & PROTECTING  
[www.dallasfirerescue.com](http://www.dallasfirerescue.com)